

5. Takmičenje "Kornelije" - 2018.

Teorija muzike

IIIc kategorija
I grupa

Ime i prezime učenika

1. Napiši i prepoznaj sledeće tonove :

A musical staff with a treble clef. The notes are: H (middle C), gis³ (G3), f (F3), 1G (G3), cis² (C4), b (B3), and #e (E4). The notes are placed on the staff lines and spaces.

(10x0,5)

Ukupno:

2. a) Prepoznaj intervale i upiši šifru:

A musical staff with a treble clef. It shows five intervals: #C-D (minor second), D-E (major second), E-F (minor second), F-G (major second), and G-A (major second).

(5x1)

b) Napiši intervale od zdatog tona:

A musical staff with a bass clef. It shows five notes: B, #C, D, E, and F.

U5↑

M2↓

M10↑

V7↑

V3↓

(5x1)

Ukupno:

3. a) Napiši trozvuke naviše od zdatog tona:

A musical staff with a bass clef. It shows three triads: D₃⁵ (D3, F3, A3), U₃³ (C3, E3, G3), and M₄⁶ (F3, A3, C4).

(3x1)

b) Napiši trozvuke na glavnim stupnjevima u zdatom tonalitetu:

fis-mol
melodijski

A musical staff with a bass clef, intended for writing triads in the F minor melodic mode.

I

IV

V

(3x1)

c) Napiši trozvuke naviše u zdatom tonalitetu:

A musical staff with a treble clef, intended for writing triads in the E major mode.

(3x1)

E - moldur: VII₃⁵

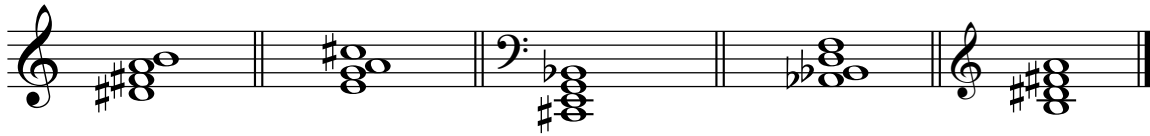
VI₄⁶

II₃⁶

Ukupno:

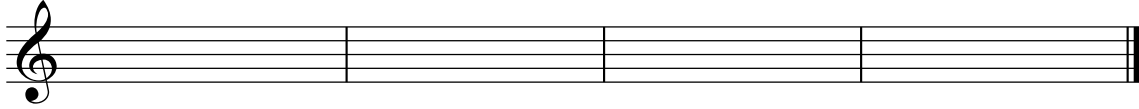
(9)

4. a) Napiši šifru četvorozvuka i odredi tonalitet:



(5x1)

b) U zadatim tonalitetima napiši tražene četvorozvuke:



A : D⁴

g : U⁷

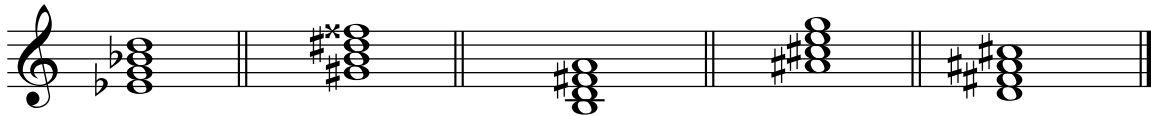
f : D₂

E : D₅⁶

(4x2)

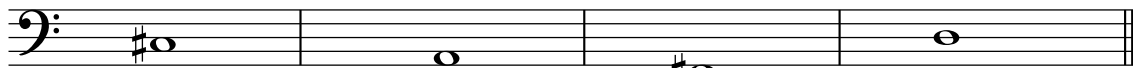
Ukupno:

5. a) Prepoznaj septakorde i odredi šifru:



(5x1)

b) Napiši septakorde navise od zdatog tona:



MM₇

PU₇

VD₇

PR₇

(4x2)

Ukupno:

6. a) Odredi mnogostranost kvintakorda:



I -----

V -----

II -----

VI -----

III -----

VII -----

IV -----

(8x1)

Ukupno:

(8)

7. a) Napiši tetrahord od zdatog tona i odredi mnogostranost:



molski ↓

D: -----

G: -----

b) Prepoznaj tetrahord i odredi mnogostranost:

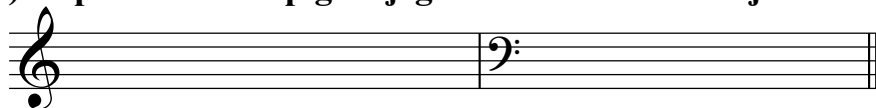


D: -----

G: -----

(4+4)

v) Napiši i utvrdi tip gornjeg tetrahorda u zadatoj lestvici:



fis - mol:

Des -

prirodni -----

moldur: -----

(2+2)

Ukupno:

(12)

8. Napisati hromatsku dursku i molsku lestvicu:



Hromatski E- dur ↑

hromatski f - mol ↑

(3+3)

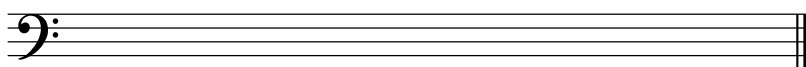
Ukupno:

(6)

9. a) Prepoznaj modus i odredi karakterističan interval:



b) Napiši modus navise i obeleži karakterističan interval:



Dorski od c

(3+3)

Ukupno:

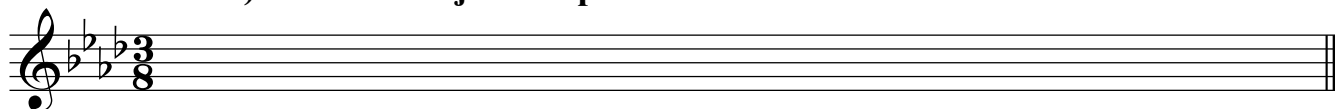
(6)

10. a) Prepoznaj tonalitet u napisanoj melodiji:



(4+4)

b) Prvu melodiju transponovati u zadati tonalitet:



(4x1)

Ukupno:

(12)

11. Poveži ista značenja:

Andante

Pokretljivije

Grave

Kratko

Staccato

Umereno

Moderato

Široko

Andantino

Korakom

Largo

Teško

(6x1)

Ukupno:

(6)

Ukupno:

Komisija: 1.-----2.-----3.-----

(100)